



Tectia[®] Client/Server 7.0 (Unix)

Quick Start Guide

07 April 2026

Tectia[®] Client/Server 7.0 (Unix): Quick Start Guide

07 April 2026

Copyright © 1995–2026 SSH Communications Security Corporation

This software and documentation are protected by international copyright laws and treaties. All rights reserved.

ssh[®] and Tectia[®] are registered trademarks of SSH Communications Security Corporation in the United States and in certain other jurisdictions.

SSH and Tectia logos and names of products and services are trademarks of SSH Communications Security Corporation. Logos and names of products may be registered in certain jurisdictions.

All other names and marks are property of their respective owners.

No part of this publication may be reproduced, published, stored in an electronic database, or transmitted, in any form or by any means, electronic, mechanical, recording, or otherwise, for any purpose, without the prior written permission of SSH Communications Security Corporation.

THERE IS NO WARRANTY OF ANY KIND FOR THE ACCURACY, RELIABILITY OR USEFULNESS OF THIS INFORMATION EXCEPT AS REQUIRED BY APPLICABLE LAW OR EXPRESSLY AGREED IN WRITING.

For Open Source Software acknowledgements, see appendix *Open Source Software License Acknowledgements* in the *User Manual*.

SSH Communications Security Corporation
Karvaamokuja 2D, FI-00380 Helsinki, Finland

Table of Contents

1. About This Document	5
1.1. Reference Documents	5
1.2. Component Terminology	6
1.3. Documentation Conventions	7
1.3.1. Operating System Names	8
1.4. Customer Support	8
2. Installation	11
2.1. Preparing for Installation	11
2.1.1. Hardware and Disk Space Requirements	11
2.1.2. Upgrading Previously Installed Tectia Software	12
2.1.3. License File	12
2.1.4. Creating Operating System User Accounts	12
2.2. Installing Tectia Software	12
2.2.1. Installing Tectia Client on Linux (RPM)	13
2.2.2. Installing on Linux (DEB)	14
2.2.3. Installing on macOS	15
2.2.4. Installing on AIX	15
2.2.5. Installing on Solaris	16
2.2.6. Installing Tectia Server on Linux (RPM)	17
2.2.7. Installing on Linux (DEB)	18
2.2.8. Installing on AIX	20
2.2.9. Installing on Solaris	21
2.2.10. Installation Complete	23
2.3. Removing Tectia Software	23
2.3.1. Removing from Linux	24
3. Connecting to Remote Server	25
3.1. First Connection with Password	25
3.2. Creating Connection Profiles	26
3.2.1. Defining Connection Profile Settings	27
4. Configuring Authentication Methods	31
4.1. Server Authentication Methods	31
4.2. User Authentication with Passwords	31
4.3. User Authentication with Public Keys	32

4.3.1. Creating Keys with Public-Key Authentication Wizard	33
4.3.2. Uploading Public Keys Automatically	36
4.3.3. Creating and Uploading Keys with the Command Line Tools	38
4.4. Setting up Non-interactive Authentication for Automatic Scripts	39
5. Using Secure File Transfer	41
5.1. Using SFTP on Tectia Client	41
5.1.1. Using SFTP on Command Line	41
5.2. Configuring Tectia Server for Automated Secure File Transfer	41
5.2.1. Configuration Settings in ssh-server-config.xml	42
5.3. Automated Secure File Transfer Script	47
6. Using Secure Application Connectivity	49
6.1. Defining Automatic Tunnels	50
6.1.1. Settings in Tectia Client	50
6.1.2. Settings in the Tunneled Application	52
6.1.3. Settings in the Connection Broker Configuration File	52
Index	55

Chapter 1 About This Document

This guide gives quick instructions for getting started with Tectia Client and Server. There are alternative client/server products for different platform architectures:

- Tectia Client/Server for AIX, Linux, Solaris, and Windows platforms
- Tectia Server for IBM z/OS for IBM mainframes

In this guide, we handle Tectia Client and Server that can be installed on Linux x86-64 and Unix platforms.

The instructions are intended for a system where Tectia Client is used to connect to Tectia Server, and both are running on the Linux/Unix operating system.

The purpose of this quick start guide is to help you in getting the Tectia client/server solution up and running with the default settings so that you can evaluate the product.

The target audience of this guide are system administrators and other professionals who need to evaluate Tectia products. To be able to use the information presented in this document, you should have system-administrator-level knowledge on Linux/Unix concepts and know what Tectia Client and Server are meant for.

1.1 Reference Documents

The Tectia client/server solution is described and more advanced user instructions are given in the following product-specific manuals:

- *Tectia Client/Server Product Description* contains general information about the product, its architecture, main features, and the product structure.
- *Tectia Client User Manual* contains detailed instructions on installing, configuring and using Tectia Client.
- *Tectia Server Administrator Manual* contains detailed instructions on installing, configuring and using Tectia Server.

Instructions for evaluating Tectia Client and Server on Windows are available in a separate quick guide *Tectia Client/Server (Windows) Quick Start Guide*.

1.2 Component Terminology

The following terms are used throughout the documentation.

client computer

The computer from which the Secure Shell connection is initiated.

Connection Broker

The Connection Broker is a component included in Tectia Client, and in the Tectia Server for IBM z/OS client tools. Connection Broker handles all cryptographic operations and authentication-related tasks.

host key pair

A public-key pair used to identify a Secure Shell server. The private hostkey file is accessible only to the server. The public key file is distributed to users connecting to the server.

remote host

Refers to the other party of the connection, [client computer](#) or [server computer](#), depending on the viewpoint.

Secure Shell client

A client-side application that uses the Secure Shell version 2 protocol, for example **sshg3**, **sftpg3**, or **scpg3** of Tectia Client.

Secure Shell server

A server-side application that uses the Secure Shell version 2 protocol.

server computer

The computer on which the Secure Shell service is running and to which the Secure Shell client connects.

SFTP server

A server-side application that provides a secure file transfer service as a subsystem of the Secure Shell server.

Tectia Client

A software component installed on a workstation. Tectia Client provides secure interactive file transfer and terminal client functionality for remote users and system administrators to access and manage servers running Tectia Server or other applications using the Secure Shell protocol. It also supports (non-transparent) static tunneling.

Tectia client/server solution

The Tectia client/server solution consists of Tectia Client, Tectia Server, and Tectia Server for IBM z/OS (including the Tectia Server for IBM z/OS client tools).

Tectia Connections Configuration GUI

Tectia Client has a graphical user interface for configuring the connection settings to remote servers. The GUI is supported on Windows and Linux.

PrivX Desktop File Transfer GUI

PrivX Desktop includes a graphical user interface (GUI) for handling and performing file transfers interactively. The GUI is supported on Windows and Linux.

Tectia Server

Tectia Server is a server-side component where Secure Shell clients connect to. There are two versions of the Tectia Server product available: *Tectia Server* for Linux, Unix and Windows platforms, and *Tectia Server for IBM z/OS*.

Tectia Server for IBM z/OS

Tectia Server for IBM z/OS provides normal Secure Shell connections and supports the enhanced file transfer (EFT) features and transparent TCP tunneling on IBM mainframes.

Tectia Server Configuration tool

Tectia Server has a graphical user interface that can be used to configure the server instead of editing the configuration file. The GUI is supported on Windows.

transparent FTP tunneling

An FTP connection transparently encrypted and secured by a Secure Shell tunnel.

transparent TCP tunneling

A TCP application connection transparently encrypted and secured by a Secure Shell tunnel.

tunneled application

A TCP application secured by a Secure Shell connection.

user key pair

A public-key pair used to identify a Secure Shell user. The private key file is accessible only to the user. The public key file is copied to the servers the user wants to connect to.

1.3 Documentation Conventions

The following typographical conventions are used in Tectia documentation:

Table 1.1. Documentation conventions

Convention	Usage	Example
Bold	Tools, menus, GUI elements and commands, command-line tools, strong emphasis	Click Apply or OK .
→	Series of menu selections	Select File → Save
Monospace	Command-line and configuration options, file names and directories, etc.	Refer to <code>readme.txt</code>
<i>Italics</i>	Reference to other documents or products, URLs, emphasis	See <i>Tectia Client User Manual</i>
<i>Monospace</i>	Replaceable text or values	<code>rename oldfile newfile</code>

Convention	Usage	Example
<i>Italics</i>		
#	In front of a command, # indicates that the command is run as a privileged user (root).	# rpm --install package.rpm
\$	In front of a command, \$ indicates that the command is run as a non-privileged user.	\$ sshg3 user@host
\	At the end of a line in a command, \ indicates that the command continues on the next line, but there was not space enough to show it on one line.	\$ ssh-keygen-g3 -t rsa \ -F -c mykey



Note

A Note indicates neutral or positive information that emphasizes or supplements important points of the main text. Supplies information that may apply only in special cases (for example, memory limitations, equipment configurations, or specific versions of a program).



Caution

A Caution advises users that failure to take or to avoid a specified action could result in loss of data.

1.3.1 Operating System Names

When the information applies to several operating systems versions, the following naming systems are used:

- **Unix** refers to the following supported operating systems:
 - IBM AIX
 - Red Hat Linux, SUSE Linux
 - Solaris
 - IBM z/OS, when applicable; as Tectia Server for IBM z/OS is running in USS and uses Unix-like tools.
- **z/OS** is used for IBM z/OS, when the information is directly related to IBM z/OS versions.
- **Windows** refers to all supported Windows versions.

1.4 Customer Support

All Tectia product documentation is available at <https://www.ssh.com/manuals/>.

FAQ with how-to instructions for all Tectia products are available at <https://documents.ssh.com/>.

If you have purchased a maintenance agreement, you are entitled to technical support from SSH Communications Security. Review your agreement for specific terms and log in at <https://support.ssh.com/>.

Information on submitting support requests, feature requests, or bug reports, and on accessing the online resources is available at <https://support.ssh.com/>.

Chapter 2 Installation

This chapter gives instructions for installing the Tectia client/server solution on the Linux 64-bit operating system running on x86-64 platform architecture.

Tectia products can also be run on other platforms. For a full list of supported operating systems and instructions for installing Tectia on them, see *Tectia Client User Manual* and *Tectia Server Administrator Manual*.

2.1 Preparing for Installation

Make the following preparations and check-ups before you start installing Tectia Client and Server.

2.1.1 Hardware and Disk Space Requirements

Tectia products do not have any special hardware requirements. They can be installed on any computer capable of running the supported operating system versions and equipped with a functional network connection.

The Tectia Client installation requires about 400 MB of disk space. Note that Tectia Client will save each user's settings in that particular user's personal directory.

The Tectia Server installation requires 600 MB free disk space.

For general installation information, see *Tectia Client User Manual* and *Tectia Server Administrator Manual*.

Prerequisites

Before installing Tectia products on Unix platform, stop any OpenSSH or other third-party Secure Shell servers running on port 22, or change their listener port. You do not need to uninstall the OpenSSH software.

If installing on SUSE, install prerequisite package `insserv-compat`.

On SELinux-enabled systems, ensure that the `semanage` command is available. In older Linux versions `semanage` is typically installed via `policycoreutils-python-utils` or `policycoreutils-python`.

2.1.2 Upgrading Previously Installed Tectia Software

If installed on the same machine, Tectia Client and Tectia Server should always be upgraded to be the same version, because there are dependencies between the common components.

Check if you have some Secure Shell software, such as earlier versions of Tectia products or third-party Secure Shell server or client, running on the machine where you are planning to install the new Tectia versions.

In the following cases you must uninstall the existing version of Tectia Client/Server before installing version 7.0.1:

- Your existing version is 4.x.
- You are installing on Solaris.

In any other case you can upgrade to Tectia Client/Server 7.0.1 without first uninstalling the existing version. The existing version will be automatically removed from the host during the installation procedure.

2.1.3 License File

Tectia Client and Server require a license to function. The license file for Tectia Client is named `stc70.dat` and the license file for Tectia Server is named `sts70.dat`.

Consider the following license-related issues:

- You need to install the license file manually to directory: `/etc/ssh2/licenses`
- In the commercial installation packages, the license file(s) are included in the compressed (`.tar`) files together with the release notes (`.txt`) files and the PDF-format documentation.
- The Tectia evaluation packages do not contain license files; the evaluation versions can be used for 45 days without a license file. A banner message will remind users of how many days are left until the license expires.
- When upgrading the evaluation version or standard commercial version to Tectia Quantum Safe Edition only license file(s) need to be copied to the license directory and Tectia Client and Server software restarted.

2.1.4 Creating Operating System User Accounts

Tectia Server does not have a user management program of its own - the user accounts are created with the standard operating system tools.

2.2 Installing Tectia Software

This section introduces how Tectia Client and Server are installed on Linux versions running on the 64-bit x86-64 platform architecture.

The installation packages of Tectia products are compressed into installation bundles.

There are three bundles for each supported operating system version, the Tectia Quantum Safe Edition commercial version (`-comm-pqc`), the commercial version (`-comm`) and the upgrade and evaluation version (`-upgrd-eval`). The commercial versions require that you also purchase a license. The evaluation versions can be used for 45 days without a license file.

2.2.1 Installing Tectia Client on Linux (RPM)

Tectia Client for Linux is supplied in RPM (Red Hat Package Manager) binary packages for Red Hat Enterprise Linux, Rocky Linux and SUSE Linux running on the 64-bit x86-64 architecture.

The Tectia installation bundle contains the RPM installation files and the license file.

To install Tectia Client on Linux, follow the instructions below:

1. Download the relevant installation bundle according to your license type:

- Commercial Tectia Quantum Safe Edition License:

```
tectia-client-<version>-linux-x86_64-comm-pqc.tar
```

- Commercial License:

```
tectia-client-<version>-linux-x86_64-comm.tar
```

- Evaluation:

```
tectia-client-<version>-linux-x86_64-upgrd-eval.tar
```

In the package names, `<version>` corresponds to the release version and build number, for example `7.0.1.123`.

2. Unpack the downloaded `tar` package.
3. Select the installation packages. Two packages are always required: one for the common components of Tectia Client and Server, and one for the specific components of Tectia Client. If you want to use the product with a graphical user interface (GUI), install also the optional GUI support package.

```
ssh-tectia-common-<version>-linux-x86_64.rpm  
ssh-tectia-client-<version>-linux-x86_64.rpm  
ssh-tectia-guisupport-<version>-linux-x86_64.rpm
```

4. Install the packages with root privileges:

```
# rpm -ivh ssh-tectia-common-<version>-linux-x86_64.rpm  
# rpm -ivh ssh-tectia-client-<version>-linux-x86_64.rpm  
# rpm -ivh ssh-tectia-guisupport-<version>-linux-x86_64.rpm
```

Or upgrade the packages if you already have an older Tectia Client version installed:

```
# rpm -Uvh ssh-tectia-common-<version>-linux-x86_64.rpm
```

```
# rpm -Uvh ssh-tectia-client-<version>-linux-x86_64.rpm
# rpm -Uvh ssh-tectia-guisupport-<version>-linux-x86_64.rpm
```

- Copy the license file to the `/etc/ssh2/licenses` directory. (*This is not necessary in "third-digit" maintenance updates.*) See also [Section 2.1.3](#).
- Before you can run the *PrivX Desktop* client GUI, you will need to enable and install the EPEL repository. Then install the following dependencies:

```
# dnf install xcb-util-wm xcb-util-keysyms xcb-util-cursor
```



Note

Extra dependencies for PrivX Desktop have been verified on RHEL/Rocky 8.x and later, and may need to be adapted for other RPM-based distributions.

2.2.2 Installing on Linux (DEB)

Tectia Client for Debian GNU/Linux is supplied in Debian (DEB) binary packages for Ubuntu and Debian running on the 64-bit x86-64 architecture.

The Tectia installation bundle contains the DEB installation files and the license file.

To install Tectia Client on Debian Linux, follow the instructions below:

- Download the relevant installation bundle according to your license type:

- Commercial Tectia Quantum Safe Edition License:

```
tectia-client-<version>-linux-ubuntu-x86_64-comm-pqc.tar
```

- Commercial License:

```
tectia-client-<version>-linux-ubuntu-x86_64-comm.tar
```

- Evaluation:

```
tectia-client-<version>-linux-ubuntu-x86_64-upgrd-eval.tar
```

In the package names, `<version>` corresponds to the release version and build number, for example `7.0.1.123-1`.

- Unpack the downloaded `tar` package.
- Select the installation packages. Two packages are always required: one for the common components of Tectia Client and Server, and one for the specific components of Tectia Client.

```
ssh-tectia-common-<version>_linux-x86_64.deb
ssh-tectia-client-<version>_linux-x86_64.deb
```

- Install the packages with root privileges:

```
# dpkg -i ssh-tectia-common-<version>_linux-x86_64.deb
```

```
# dpkg -i ssh-tectia-client-<version>_linux-x86_64.deb
```

5. Copy the license file to the `/etc/ssh2/licenses` directory. (*This is not necessary in "third-digit" maintenance updates.*)

6. Before you can run the *PrivX Desktop* client GUI, install the following dependencies:

```
# apt install libxcb-cursor0
```



Note

Extra dependencies for PrivX Desktop have been verified on Ubuntu, and may need to be adapted for other Debian-based distributions.

2.2.3 Installing on macOS

The macOS installation package is provided in the PKG (Installer Package) format for macOS versions running on the ARM platform architecture.

The installation package is a Disk Image (DMG) file containing the license file and the executable Installer (PKG) packages.

You must have administrative privileges to install Tectia Client on macOS.

To install Tectia Client on macOS, do the following:

1. Click the installation dmg file to open the Disk Image.



Note

The license file will be automatically imported to the correct location when you run the installer PKG in a commercial Disk Image.

2. Locate the correct installation file `ssh-tectia-client-<version>-mac-arm64.pkg`, where:

- `<version>` shows the Tectia Client/Server release version and build number, for example `7.0.1.123`.

3. Double-click the installation file, and the Installer will start.

4. Follow the Installer through the installation steps and fill in information as requested.

5. When the installation has finished, click **Close** to exit the Installer.

The default installation directory is:

- `"/Applications"`

2.2.4 Installing on AIX

The downloaded installation package contains the compressed installation files.

Two packages are required: one for the common components of Tectia Client and Server, and one for the specific components of Tectia Client and Server.

To install Tectia Client and Server on AIX, follow the instructions below:

1. Unpack the downloaded `tar` package.
2. Unpack the installation packages:

```
$ unzip ssh-tectia-common-<version>-aix-6-7-powerpc.bff.Z
$ unzip ssh-tectia-client-<version>-aix-6-7-powerpc.bff.Z
```

In the commands, `<version>` is the current package version of Tectia Client and Server (for example, 7.0.1.123).

3. Install the packages by running the following commands with root privileges:

```
# installp -d ssh-tectia-common-<version>-aix-6-7-powerpc.bff SSHTectia.Common
# installp -d ssh-tectia-client-<version>-aix-6-7-powerpc.bff SSHTectia.Client
```

4. Copy the license file to directory: `/etc/ssh2/licenses`. (*This is not necessary in "third-digit" maintenance updates.*)

2.2.5 Installing on Solaris

The downloaded installation package contains the compressed installation files.

Two packages are required: one for the common components of Tectia Client and Server, and one for the specific components of Tectia Client and Server.

Tectia Client and Server includes support for Zones on Solaris 11. The Tectia software can be installed into the global and local zones. When the Tectia software is installed into the global zone, it becomes automatically installed also into the existing local zones. However, if the local zones are added into the system later, the Tectia Client and Server needs to be separately installed on them.

In case you are installing Tectia Client and Server into a sparse zone, note that the installation process will report a failure in creating symlinks. The actual installation is finished successfully, but you need to manually add the `/opt/tectia/bin` to the path settings.

For information on the Solaris Zones, see the Oracle documentation: *System Administration Guide: Solaris Containers-Resource Management and Solaris Zones*.

To install Tectia Client and Server on Solaris, follow the instructions below:

1. Unpack the downloaded `tar` package.
2. When installing on Solaris version 11 running on the SPARC architecture, use the packages named:

```
ssh-tectia-common-<version>-solaris-11-sparc.pkg.Z
```

```
ssh-tectia-client-<version>-solaris-11-sparc.pkg.Z
```

When installing on Solaris version 11 running on the x86-64 architecture, use the packages named:

```
ssh-tectia-common-<version>-solaris-11-x86_64.pkg.Z
ssh-tectia-client-<version>-solaris-11-x86_64.pkg.Z
```

In the commands, *<version>* indicates the product release version and the current build number (for example, 7.0.1.123).

3. Unpack the installation packages to a suitable place. The standard place is `/var/spool/pkg` in Solaris environment. In the command examples below, we use Solaris 11 x86-64:

```
$ unzip ssh-tectia-common-<version>-solaris-11-x86_64.pkg.Z
$ unzip ssh-tectia-client-<version>-solaris-11-x86_64.pkg.Z
```

4. Install the packages with the `pkgadd` tool with root privileges:

```
# pkgadd -d ssh-tectia-common-<version>-solaris-11-x86_64.pkg all
# pkgadd -d ssh-tectia-client-<version>-solaris-11-x86_64.pkg all
```

5. Copy the license file to directory: `/etc/ssh2/licenses` (*This is not necessary in "third-digit" maintenance updates.*) .

2.2.6 Installing Tectia Server on Linux (RPM)

Tectia Server for Linux platforms is supplied in RPM (Red Hat Package Manager) binary packages for Red Hat Enterprise Linux, Rocky Linux and SUSE Linux running on the 64-bit x86-64 architecture.

The Tectia Server installation bundle contains the RPM files and the license files for both the Tectia Server and Tectia Client that can be optionally installed on the same host.

To install Tectia Server on Linux, follow the instructions below:

1. Make sure no other Secure Shell software is using port 22 (Tectia Server default listen port). Also make sure the firewall is open for port 22.
2. Download the installation bundle according to your license type:

- Commercial Tectia Quantum Safe Edition License:

```
tectia-server-<version>-linux-x86_64-comm-pqc.tar
```

- Commercial License:

```
tectia-server-<version>-linux-x86_64-comm.tar
```

- Evaluation:

```
tectia-server-<version>-linux-x86_64-upgrd-eval.tar
```

In the package names, *<version>* is the current product release (for example, 7.0.1.123).

3. Unpack the downloaded `tar` package.
4. Select the installation packages (in this example, we install Tectia Server only). Two packages are always required: one for the common components of Tectia Client and Server, and one for the specific components of Tectia Server.

```
ssh-tectia-common-<version>-linux-x86_64.rpm
ssh-tectia-server-<version>-linux-x86_64.rpm
```



Note

If you have already installed Tectia Client, you don't need to install the `common` file again.

5. Install the packages with root privileges:

```
# rpm -ivh ssh-tectia-common-<version>-linux-x86_64.rpm
# rpm -ivh ssh-tectia-server-<version>-linux-x86_64.rpm
```

The server host key is generated during the initial installation. The key generation may take several minutes on slow machines.

Or upgrade the packages if you already have an older Tectia Server version installed:

```
# rpm -Uvh ssh-tectia-common-<version>-linux-x86_64.rpm
# rpm -Uvh ssh-tectia-server-<version>-linux-x86_64.rpm
```

6. Copy the license file to the `/etc/ssh2/licenses` directory. (*This is not necessary in "third-digit" maintenance updates.*) See also [Section 2.1.3](#).

If this is the initial installation of Tectia, the directory does not yet exist. You can either create it manually or copy the license after the installation. In the latter case, you have to start Tectia Server manually after copying the license file.

7. The installation should (re)start Tectia Server automatically.

If Tectia Server does not start (for example because of a missing license or because some other secure shell software is running on port 22), you can start it after correcting the problem by issuing the command:

```
# ssh-server-ctl start
```

For troubleshooting instructions, see *Tectia Server Administrator Manual*.

2.2.7 Installing on Linux (DEB)

Tectia Server for Debian GNU/Linux platforms is supplied in Debian (DEB) binary packages for Ubuntu and Debian running on the 64-bit x86-64 architecture.

The Tectia Server installation bundle contains the DEB files and the license files for both the Tectia Server and Tectia Client that can be optionally installed on the same host.

To install Tectia Server on Debian, follow the instructions below:

1. Make sure no other Secure Shell software is using port 22 (Tectia Server default listen port). Also make sure the firewall is open for port 22.
2. Download the installation bundle according to your license type:

- Commercial Tectia Quantum Safe Edition License:

```
tectia-server-<version>-linux-ubuntu-x86_64-comm-pqc.tar
```

- Commercial License:

```
tectia-server-<version>-linux-ubuntu-x86_64-comm.tar
```

- Evaluation:

```
tectia-server-<version>-linux-ubuntu-x86_64-upgrd-eval.tar
```

In the package names, `<version>` is the current product release (for example, 7.0.1.123-1).

3. Unpack the downloaded `tar` package.
4. Select the installation packages (in this example, we install Tectia Server only). Two packages are always required: one for the common components of Tectia Client and Server, and one for the specific components of Tectia Server.

```
ssh-tectia-common-<version>_linux-x86_64.deb
ssh-tectia-server-<version>-linux-x86_64.deb
```

5. Install the packages with root privileges:

```
# dpkg -i ssh-tectia-common-<version>_linux-x86_64.deb
# dpkg -i ssh-tectia-server-<version>-linux-x86_64.deb
```



Note

If you have already installed Tectia Client, you don't need to install the `common` file again.

The server host key is generated during the initial installation. The key generation may take several minutes on slow machines.

6. Copy the license file to the `/etc/ssh2/licenses` directory. (*This is not necessary in "third-digit" maintenance updates.*)

If this is the initial installation of Tectia, the directory does not yet exist. You can either create it manually or copy the license after the installation. In the latter case, you have to start Tectia Server manually after copying the license file.

7. The installation should (re)start Tectia Server automatically.

If Tectia Server does not start (for example because of a missing license or because some other secure shell software is running on port 22), you can start it after correcting the problem by issuing the command:

```
# ssh-server-ctl start
```

2.2.8 Installing on AIX

The downloaded installation package contains the compressed installation files.

Two packages are required: one for the common components of Tectia Client and Server, and one for the specific components of Tectia Client and Server.

If you are upgrading Tectia Server version 6.2.1 or earlier to 7.0, you must do the following steps before installing the new version:

1. Rename the subsystem group from `tcpip` to `ssh-tectia-server`:

```
# /usr/bin/rmssys -s ssh-tectia-server
```

2. Redefine `ssh-tectia-server` with the new group option:

```
# mkssys -s ssh-tectia-server -p "/opt/tectia/sbin/ssh-server-g3" -q -u 0 -S \
-n 15 -f 9 -R -G ssh-tectia-server -i /dev/null -o /dev/null -e \
/dev/null
```

3. Restart the `ssh-tectia-server`:

```
# stopsrc -s ssh-tectia-server
```

```
# startsrc -s ssh-tectia-server
```

Now you can continue with the installation steps.

Note that upgrading from Tectia Server version 6.2.x or 6.3.x will not restart the server automatically after installing the upgrade packages. Upgrading from Tectia Server versions 6.1.x (or earlier), and versions 6.4.2 (or later) will work normally and restart the server after upgrade.

To install Tectia Client and Server on AIX, follow the instructions below:

1. Unpack the downloaded `tar` package.
2. Make sure no other software is using port 22 (Tectia Server default listen port). Stop any competing server software or change their listen port.
3. Unpack the installation packages:

```
$ uncompress ssh-tectia-common-<version>-aix-6-7-powerpc.bff.Z
$ uncompress ssh-tectia-server-<version>-aix-6-7-powerpc.bff.Z
```

In the commands, `<version>` is the current package version of Tectia Client and Server (for example, 7.0.1.123).

4. Install the packages by running the following commands with root privileges:

```
# installp -d ssh-tectia-common-<version>-aix-6-7-powerpc.bff SSHTectia.Common
# installp -d ssh-tectia-server-<version>-aix-6-7-powerpc.bff SSHTectia.Server
```

The server host key is generated during the initial installation. The key generation may take several minutes on slow machines.

5. Copy the license file to directory: `/etc/ssh2/licenses`. (*This is not necessary in "third-digit" maintenance updates.*)

If this is the initial installation of Tectia Client and Server, the directory does not yet exist. You can either create it manually or copy the license after the installation. In the latter case, you have to start the server manually after copying the license file.

6. The installation should (re)start the server automatically.



Note

If you upgraded from Tectia Server 6.2.x or 6.3.x, the server will not restart automatically.



Note

If the server does not start (for example because of a missing license or because some other secure shell software is running on port 22), correct the problem and you can start the server process by using the System Resource Controller (SRC).

To start Tectia Server manually, enter command:

```
# startsrc -s ssh-tectia-server
```

Installing 32-bit LAM package for AIX

There is a 32-bit binary `ssh-aix-lam-proxy32` shipped with the Tectia Server installation package for AIX. In some cases there is a need to use a 32-bit Lightweight Authentication Module (LAM) in a 64-bit operating system, for example, when using Safeword authentication via LAM.

There are two binaries in `/opt/tectia/libexec`:

- `ssh-aix-lam-proxy` (64-bit binary)
- `ssh-aix-lam-proxy32` (32-bit binary)

By default, the 64-bit binary is used. If the 32-bit binary is to be used, follow these steps:

1. Backup the `ssh-aix-lam-proxy` to a safe place.
2. Copy the `ssh-aix-lam-proxy32` to `ssh-aix-lam-proxy`.

This will automatically start using the 32-bit LAM on the 64-bit AIX host.

2.2.9 Installing on Solaris

The downloaded installation package contains the compressed installation files.

Two packages are required: one for the common components of Tectia Client and Server, and one for the specific components of Tectia Client and Server.

Tectia Client and Server includes support for Zones on Solaris 11. The Tectia software can be installed into the global and local zones. When the Tectia software is installed into the global zone, it becomes automatically installed also into the existing local zones. However, Tectia Server needs to be separately installed into local zones added later into the system.

In case you are installing Tectia Client and Server into a sparse zone, note that the installation process will report a failure in creating symlinks. The actual installation is finished successfully, but you need to manually add the `/opt/tectia/bin` to the path settings.

For information on Solaris Zones, see the Oracle's documentation: *System Administration Guide: Solaris Containers-Resource Management and Solaris Zones*.

To install Tectia Client and Server on Solaris, follow the instructions below:

1. Unpack the downloaded `tar` package.
2. Make sure no other software is using port 22 (Tectia Server default listen port). Stop any competing server software or change their listen port.
3. When installing on Solaris version 11 running on the SPARC architecture, use the following packages:

```
ssh-tectia-common-<version>-solaris-11-sparc.pkg.Z
ssh-tectia-server-<version>-solaris-11-sparc.pkg.Z
```

When installing on Solaris version 11 running on the x86-64 architecture, use the following packages:

```
ssh-tectia-common-<version>-solaris-11-x86_64.pkg.Z
ssh-tectia-server-<version>-solaris-11-x86_64.pkg.Z
```

In the commands, `<version>` indicates the product release version and the current build number (for example, `7.0.1.123`).

4. Unpack the installation packages to a suitable location. The standard location is `/var/spool/pkg` in Solaris environment. In the command examples below, we use the x86-64 version for Solaris 11:

```
$ unzip ssh-tectia-common-<version>-solaris-11-x86_64.pkg.Z
$ unzip ssh-tectia-server-<version>-solaris-11-x86_64.pkg.Z
```

5. Install the packages with the `pkgadd` tool with root privileges:

```
# pkgadd -d ssh-tectia-common-<version>-solaris-11-x86_64.pkg all
# pkgadd -d ssh-tectia-server-<version>-solaris-11-x86_64.pkg all
```

The server host key is generated during the installation. The key generation may take several minutes on slow machines.

6. Copy the license file to the `/etc/ssh2/licenses` directory. (*This is not necessary in "third-digit" maintenance updates.*)

If this is the initial installation of Tectia Client and Server, the directory does not yet exist. You can either create it manually or copy the license after the installation. In the latter case, you have to start the server manually after copying the license file.

7. The installation should (re)start the server automatically.



Note

If the server does not start (for example because of a missing license or because some other secure shell software is running on port 22), you can start it after correcting the problem by issuing the command:

```
# /etc/init.d/ssh-server-g3 start
```



Tip

On Solaris, it is recommended that you raise the maximum open files limit. The default limit for open files per process is set to 256, but it is too low for Tectia Server that will receive lots of connections. The servant may run out of file descriptors causing the connections to fail.

How much the maximum open files limit must be raised, depends on the system and the number of servants running; 8192 should be sufficient in most cases.

To set the maximum open files limit to 8192, before starting **ssh-server-g3**, run this command in shell:

```
# ulimit -n 8192
```

The default limit set for open files varies between operating system versions. Refer to the instructions of your operating system for more information.

2.2.10 Installation Complete

After a successful installation, Tectia Server is automatically started at reboot and keeps running in the background until you stop it manually, or shut the host down.

You can use Tectia Client and Tectia Server with the default settings to test their functions. For instructions on opening a secure connection for the first time, see [Chapter 3](#).

It is also possible to customize the behavior of the Tectia client/server solution according to your needs. To learn more about modifying the Tectia configuration for different purposes, refer to the later chapters in this manual:

- [Chapter 4](#) explains configuring of authentication methods
- [Chapter 5](#) explains secure file transfer
- [Chapter 6](#) explains securing application connections.

2.3 Removing Tectia Software

If you need to remove the Tectia Client and Server software, follow the instructions below.



Note

The uninstallation procedure removes only the files that were created when installing the software. Any configuration files have to be removed manually from directory `/etc/ssh2` and from each user's `$HOME/.ssh2` directory.

2.3.1 Removing from Linux

To remove Tectia Client and Server RPM installation from a Linux environment, follow the instructions below:

1. Log in as root user.
2. Stop Tectia Server by giving the following command:

```
# ssh-server-ctl stop
```

3. Remove the Tectia Server installation by giving the following command:

```
# rpm -e ssh-tectia-server
```

4. Remove the Tectia Client installation by giving the following command :

```
# rpm -e ssh-tectia-client
```

5. Remove the GUI support components by giving the following command:

```
# rpm -e ssh-tectia-guisupport
```

6. If you will remove both Tectia Client and Server, remove also the common components by giving the following command:

```
# rpm -e ssh-tectia-common
```

Chapter 3 Connecting to Remote Server

This section explains how you can log in from Tectia Client to Tectia Server using password authentication with the default settings. The default settings on Tectia Client and Server allow login with passwords, public keys, GSSAPI, and keyboard-interactive. By default, passwords are used for user authentication, and public keys for server authentication.

You are expected to have a user account on the remote server where you will connect, and the server must have a Secure Shell server running. In the following example, you can also just connect within the local machine, to make sure that you know the server's address and that it has Tectia Server running.

3.1 First Connection with Password

You can connect to a remote host by using **sshg3** on the command line:

1. Enter the **sshg3** command using the following syntax:

```
$ sshg3 <hostname>
```

For example:

```
$ sshg3 abc.example.com
```

The basic syntax is:

```
$ sshg3 user@host#port
```

where:

- **user** - Enter a user name that is valid on the remote host. The **user@** attribute is optional. If no user name is given, the local user name is assumed.
 - **host** - Enter the name of the remote host as an IP address, FQDN (fully qualified domain name), or short host name. The remote host must be running a Secure Shell version 2 server.
 - **port** - Enter the number of the Secure Shell listen port on the remote server. The **#port** attribute is optional. If no port is given, the default Secure Shell port 22 is assumed.
2. The server authentication phase starts. The server sends its public key to the client for validation (when server public-key authentication is used).

When Tectia Client receives a new host public key, a host identification message is displayed. For example:

```
$ sshg3 user@server
Host key for the host "server" not found from database.

The fingerprint of the host public key is:

Babble: "xozif-hynas-sehuf-mabyz-zytez-resog-gogum-rilyk-sefop-rucit-paxix"
SHA-256: "E6uSBGEWQTGJdTVBiccvP8PNkQxwAKEWh0aAJTEK4WY"

You can get a public key's fingerprint by running
% ssh-keygen-g3 -F publickey.pub
on the key file.

Please select how you want to proceed.
  cancel) Cancel the connection.
  once) Proceed with the connection but do not save the key.
  save) Proceed with the connection and save the key for future use.
Please select one (cancel, once, save):
```

The message shows the fingerprint of the host's public key in the SSH Babble format that is a series of pronounceable five-letter words in lower case and separated by dashes and by default in base64-encoded SHA-256 format.

3. Verify the validity of the fingerprint, preferably by contacting the administrator of the remote host computer by telephone.

After the fingerprint has been verified and found to be correct, it is safe to save the key and continue connecting.

If you choose to save the server public key, relevant information about the key will be stored on the client host in directory `$HOME/.ssh2/hostkeys`. After the first connection, the locally stored information about the server public key will be used in server authentication.

4. The user authentication phase starts. You will be prompted to authenticate yourself to the server with your password.

After the server has successfully authenticated you, the Secure Shell connection to the server is opened.

3.2 Creating Connection Profiles

On Tectia Client on Linux, you can configure separate connection settings for each Secure Shell server you connect to. You can also create several profiles for the same server, for example, with different user accounts.

Open the **Tectia Connections Configuration GUI**:

1. Go to the `/opt/tectia/bin` directory by entering:

```
$ cd /opt/tectia/bin/
```

2. Start the **Tectia Connections Configuration GUI** with the following command:

```
$ ssh-tectia-configuration
```

In the Tectia Connections Configuration GUI, go to the **Connection Profiles** page (as shown below) and click **Add profile**.

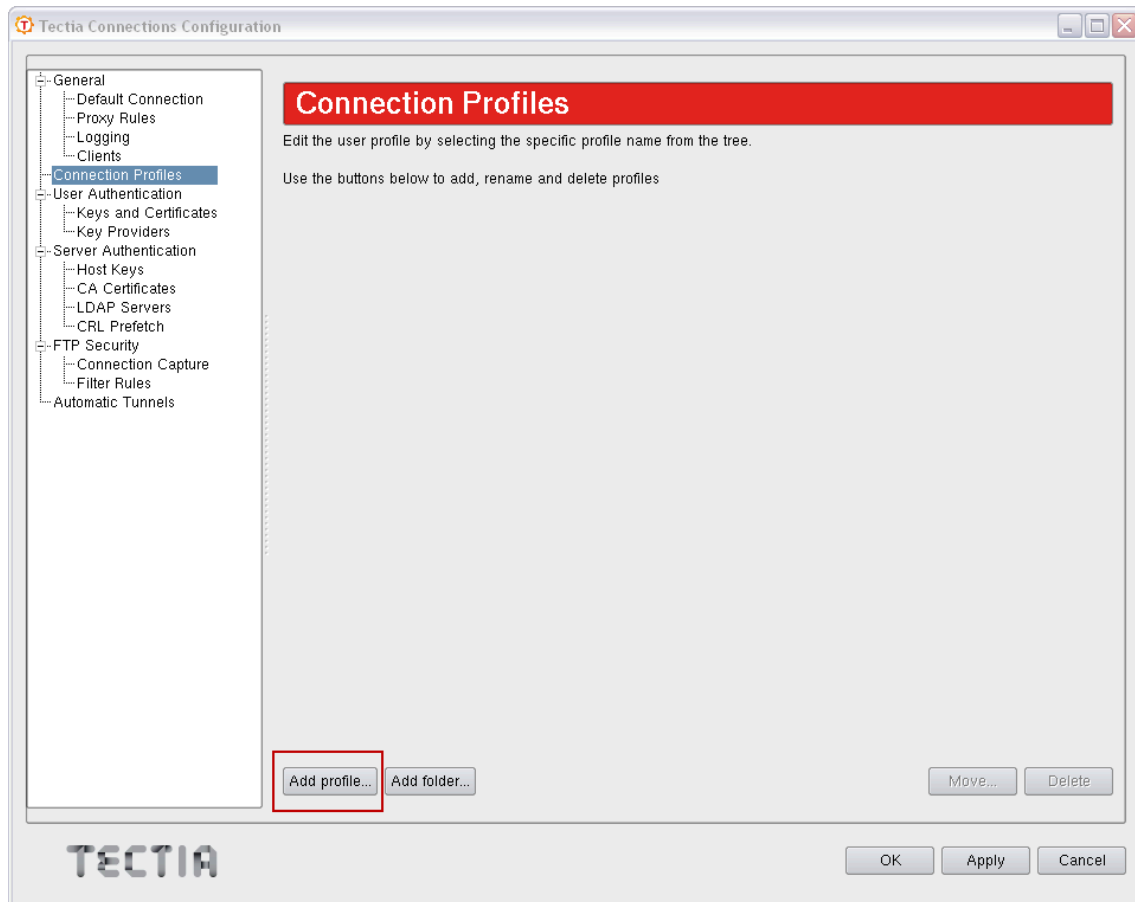


Figure 3.1. Adding connection profiles

Newly created connection profiles will inherit the default values for authentication, ciphers, MACs, KEXs, tunneling, and advanced server settings defined under the **General** → **Default Connection** page. The values can be customized on the profile-specific tabbed pages, see [Figure 3.2](#).

To rename a connection profile, right-click the profile name in the **Connection Profiles** list and click **Rename**. Type in the new name.

To remove a connection profile, select the profile and click **Delete**. You will be asked for confirmation. Click **Yes** to proceed with the deletion.

3.2.1 Defining Connection Profile Settings

Under the **Connection Profile** page, on the **Connection** tab, you can define the protocol settings used in the connection. Any changed connection settings will take effect the next time you log in.

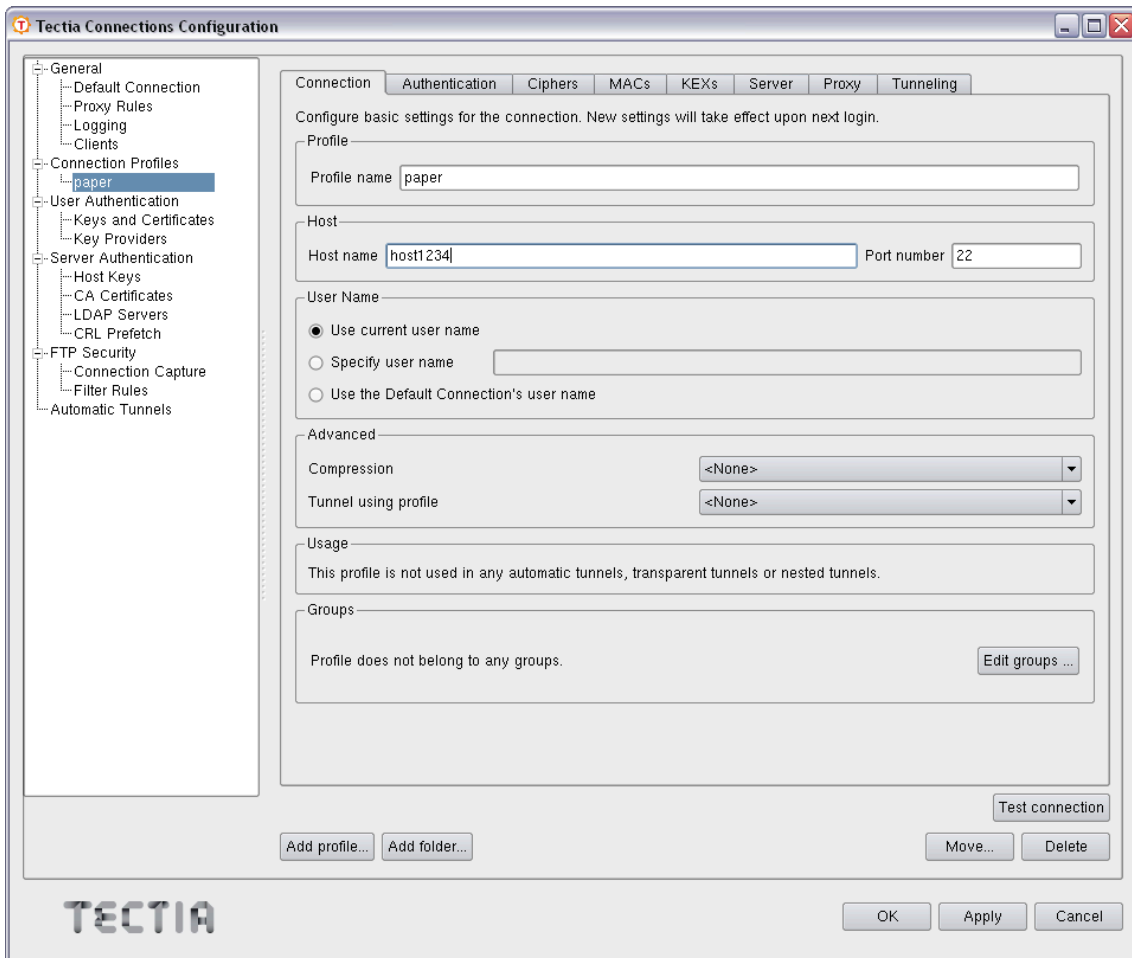


Figure 3.2. Configuring connection profiles

Profile

In **Profile name**, type a name for the profile.

Host

In **Host name**, enter the name of the remote host computer to which you want to connect with the profile.

In **Port number**, enter the port number you want to use for the Secure Shell connection. The default port is 22.



Note

A Secure Shell server program must be listening to the specified port on the remote host computer or the connection attempt will not succeed. If you are unsure which port the remote host computer is listening to, contact the system administrator of the remote host.

User Name

Select **Use current user name** if the connection should always be made using the currently logged in Unix user name. This is similar to defining %USERNAME% (note the percent signs) as the user name.

Select **Specify user name** and enter the user name, if you want to define the user name to be used when connecting to the remote host computer. If you specify %USERNAME% (note the percent signs) as the user name, it will be replaced with the name of the current Unix user account upon connecting.

Advanced

Not needed now: In **Compression**, select the desired compression setting from the drop-down menu. Valid choices are **zlib** and **none**. Compression is disabled by default.

Not needed now: In **Tunnel using profile**, select the desired connection profile from the drop-down menu. Any nested tunnels will be created through the profile. For information on the tunneling features, refer to the *Tectia Client User Manual*.

Chapter 4 Configuring Authentication Methods

The Tectia client/server solution has separate authentication procedures for authenticating the servers and the users. The authentication is mutual; the client authenticates the server and the server authenticates the user.

The server configuration defines which authentication methods are allowed, and the client configuration defines the order in which the methods will be tried.

In this guide we introduce how public-key authentication is used in authenticating the remote Tectia Server host. For user authentication, we introduce both the password authentication method, as it is set up by default, and public keys, which provide stronger security and make it possible to use non-interactive login securely.

4.1 Server Authentication Methods

The server is authenticated with a digital signature based on an RSA, DSA, ECDSA or Ed25519 public-key algorithm.

During the server installation process, one RSA key pair (with the file names `hostkey` and `hostkey.pub`) is generated and stored on the server host in directory `/etc/ssh2`. By default, this key pair is used for server authentication.

For information on connecting to a remote server for the first time, see [Chapter 3](#).

4.2 User Authentication with Passwords

The password and public-key authentication methods are set up by default on both Tectia Client and Server. Passwords are the easiest method for authenticating users because no configuring is required on the server side. The passwords are protected from eavesdroppers, since all communication is encrypted.

On Linux, password authentication uses the `/etc/passwd` or `/etc/shadow` file, depending on how the passwords are set up.

4.3 User Authentication with Public Keys

Public-key authentication is based on the use of digital signatures and provides very good authentication security.

To use public keys in user authentication, you must first create a key pair on the client. One of the created key files is your public key, and the other is your secret private key.

The security level of the key pair depends on the complexity (or bit length) of the key. Larger keys are more secure, but generating and using them takes a longer time.



Note

The default RSA key size (3072 bits) provides 128-bit security and default ECDSA key size (384 bits) provides 192-bit security. We do not recommend generating RSA or DSA keys smaller than 2048 bits even for interoperability with 3rd party implementations.



Note

We recommend you to replace your SSH keys with new ones at a minimum frequency of every two years.

The server must know the user's public key, so you need to upload the public key to the server, but the private key must remain only in your possession.

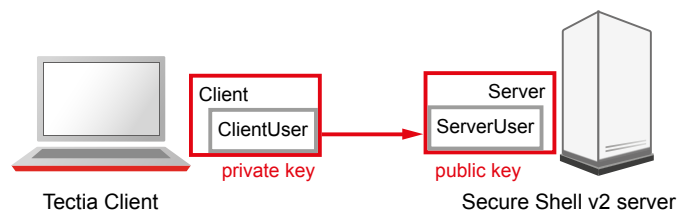


Figure 4.1. User public-key authentication

When you start logging in to a remote server, the client sends a signature to the server, and the server checks for matching public keys. If the key is protected with a passphrase, the client requests you to enter the passphrase.

Remember that your private key is used to authenticate you. Keep your private key in a secure place and make sure that no one else has access to it. If anyone else can access your private key, they can attempt to log in to the remote host computer pretending to be you. Define a passphrase to protect your private key, whenever possible.



Caution

Generate keys only on your personal computer that no one else can access! Do not store your private key on a computer that is shared with other users.

When you start using public-key authentication, do the following:

1. Generate a key pair. You can generate your own key files with the help of a built-in **Public-Key Authentication Wizard** (see [Section 4.3.1](#)), or using the command line tool **ssh-keygen-g3** (see [Section 4.3.3](#)).

You can also import existing keys on the **Keys and Certificates** page of the **Tectia Connections Configuration GUI**.

2. Upload your public key to the remote host computer (running Tectia Server) automatically (see [Section 4.3.2](#)).



Note

Tectia Server supports also user public keys generated with OpenSSH. Tectia Server can be configured to check the OpenSSH `authorized_keys` file in addition to the Tectia `authorized_keys` directory and/or `authorization` file. Public keys defined in the Tectia locations have precedence over the keys in the OpenSSH file if the same key is defined in both.

These instructions assume that the client user is allowed to log in to the remote host, where Tectia Server is running, using password authentication.

4.3.1 Creating Keys with Public-Key Authentication Wizard

On Linux, you can use the Tectia **Public-Key Authentication Wizard** to generate a key pair. The wizard will generate two key files, your private key and your public key, and store them in the `$HOME/.ssh2` directory on your local computer. The public key has `.pub` as the file extension, and the private key file has the same base file name as the public key but no file extension.

Public key pairs can also be generated with the command line tool **ssh-keygen-g3**. For instructions, see [Section 4.3.3](#).

1. Go to the `/opt/tectia/bin` directory by entering:

```
$ cd /opt/tectia/bin/
```

2. Start the **Tectia Connections Configuration GUI** with the following command:

```
$ ssh-tectia-configuration
```

3. Go to **User Authentication** and select the **Keys and Certificates** page. Click **New key**.

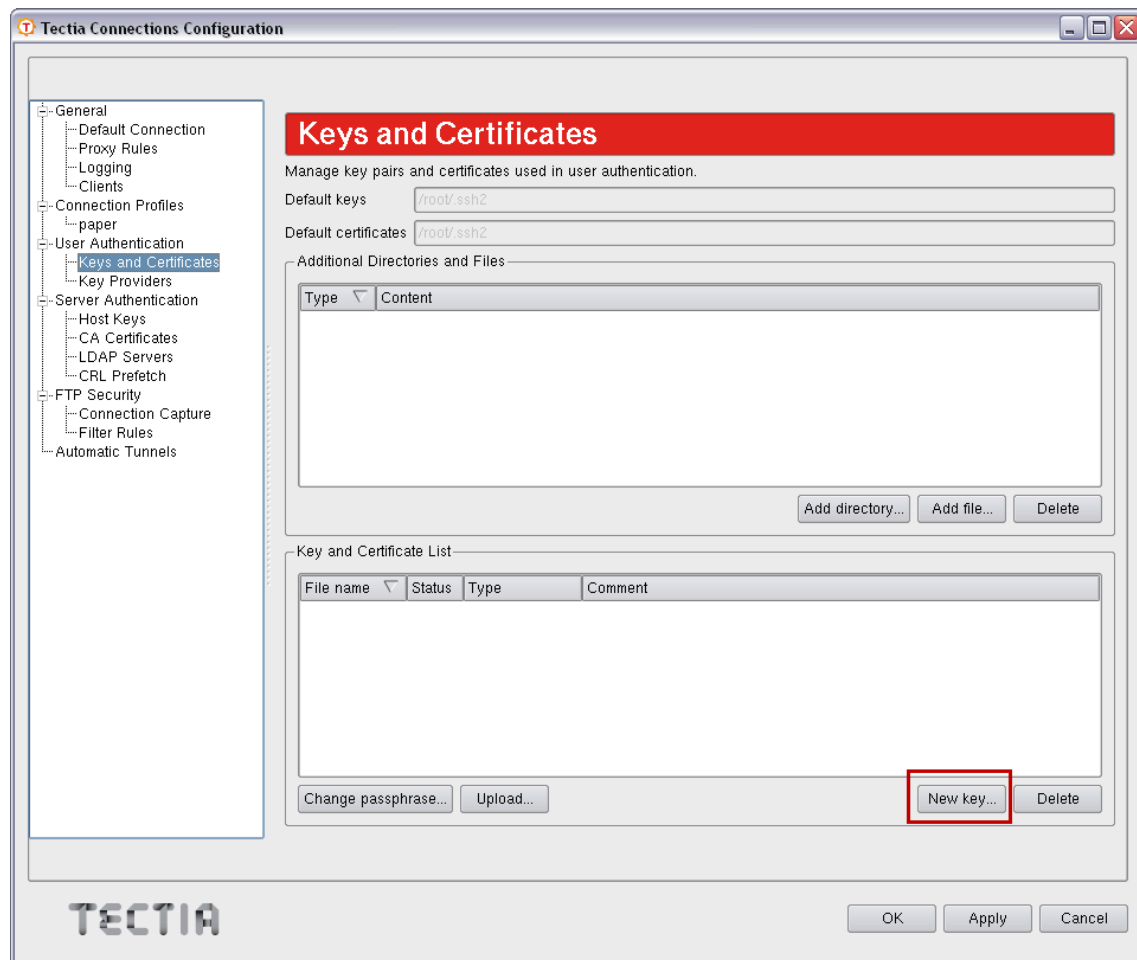


Figure 4.2. Tectia Connections Configuration GUI, Keys and Certificates view

4. The **Public-Key Authentication Wizard** starts.

The screenshot shows a 'Public-Key Authentication Wizard' window. It is divided into three main sections. The first section, 'Enter properties for a new key', has a 'File name' field containing 'key-admin@examplehost' and a 'Comment' field containing '2048-bit rsa, admin@examplehost, Wed Feb 03 2016 12:34:43 +0200'. The second section, 'Enter a passphrase for the key', has two fields: 'Passphrase' and 'Retype passphrase', both containing a series of asterisks. The third section, 'Key properties', has a 'Hide Options' button and two dropdown menus: 'Key type' set to 'RSA' and 'Key length' set to '2048'. At the bottom of the window are three buttons: '< Back', 'Next >', and 'Cancel'.

Figure 4.3. The Public-Key Authentication Wizard

5. Define the key properties and the required passphrase to protect your key pair.

File Name

Type a unique name for the key file. The wizard suggests a name consisting of your user name and the host name.

Comment

Write a short comment that describes the key pair. For example, describe the connection the key is used for. The wizard suggests a comment consisting of the key length and type, your user name and the host name, and the current date and time. This field is not obligatory, but it helps to identify the key later.

Passphrase

Type a phrase that is difficult to guess. Use ideally at least 20 characters, both letters and numbers. Any punctuation characters can be used as well. While the passphrase or private key is never sent over the network, a dictionary attack can be used against a private key if it is accessible locally. For ease of use, an authentication agent is recommended instead of leaving the passphrase empty. By default ssh-broker-g3 functions as an authentication agent.

 **Note**

In FIPS mode, due to a FIPS regulation which forbids exporting unencrypted private keys out of the FIPS module, it is not possible to generate user keys without a passphrase.

If the key pair will be used for automated jobs, you can leave the passphrase field empty to generate the key without a passphrase.

You will be requested to enter the passphrase always when using the keys to authenticate yourself. The passphrase works in a way similar to a password and gives some protection for your private key.

Memorize the passphrase carefully, and do not write it down.

Retype passphrase

Type the passphrase again. This ensures that you have not made a typing error.

6. Click the **Advanced Options** if you want to define the type and/or length of the key to be generated to be different from the defaults. By default, Tectia Client generates a pair of 3072-bit RSA keys.

In the **Key Properties** area, you can define the following:

Key Type

Select the type of the key to be generated. Available options are Ed25519, RSA, ECDSA and DSA.

 **Note**

In FIPS mode (conforming to FIPS 186-5) RSA, ECDSA and Ed25519 are supported. DSA has been deprecated.

Key Length

Select the length (complexity) of the key to be generated. Available options are:

- DSA/RSA keys: 2048, 3072, 4096, 5120, 6144, 7168, 8192 bits
- ECDSA keys: 256, 384, 521 bits
- Ed25519 keys: 256 bits

Larger keys of the same key type are more secure, but also slower to generate. A 256-bit ECDSA key and a 3072-bit RSA key provide equivalent security.

7. Click **Next** to proceed to uploading the key. The wizard continues with Step 3 in [Section 4.3.2](#).

Uploading existing public keys to new remote servers is instructed in [Section 4.3.2](#).

4.3.2 Uploading Public Keys Automatically

Public keys can be automatically uploaded to servers that have the SFTP subsystem enabled, and by default, SFTP is enabled on Tectia Servers. The **Public-Key Authentication Wizard** automatically uploads each new public key to a remote host of your choice. All existing keys are also listed on the **Keys and Certificates** page of the **Tectia Connections Configuration GUI**, and you can select a key to upload it to a remote server at any time.

The public key will be uploaded to the default user home directory (`$HOME/.ssh2` on Unix) on the remote server.

Note

The key user is required to have `write` permissions to the key directory on the server, otherwise the automatic upload will fail. The administrator of the remote host computer may have restricted user access so that users are not able to configure public-key authentication for themselves even if public-key authentication is allowed in the server configuration.

1. To access the **Public-Key Authentication Wizard**, click **User Authentication** → **Keys and Certificates** on the tree view.
2. Select a key from the **Key and Certificate List** and click **Upload**.
3. The **Upload Public Key** view of the wizard appears.

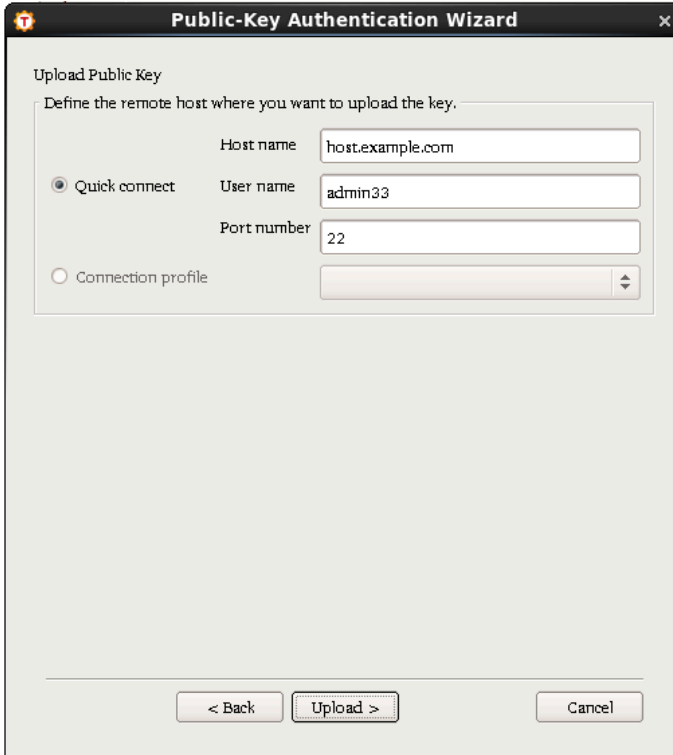


Figure 4.4. Uploading a key

Define the remote host where you want to upload the key:

Quick connect

Select this option to define the remote **Host name** and your **User name** there. The default Secure Shell **Port number** is 22.

Connection profile

Select a **Connection profile** from the drop-down list that specifies the desired remote host and user name.

4. Click **Upload** to transfer the key to the selected server. If you are already connected to the remote server host, the key upload starts immediately. If you are not connected, you will be prompted to authenticate on the server (by default with password).

4.3.3 Creating and Uploading Keys with the Command Line Tools

In addition to the Tectia Connections Configuration GUI available on Linux, you can use the command line tools for creating and uploading keys.

To create a public key pair, run **ssh-keygen-g3** on the command line on Tectia Client:

```
Client$ ssh-keygen-g3
Generating 3072-bit rsa key pair
 15 o.oOo.oOo.o
Key generated.
3072-bit rsa, ClientUser@Client, Mon Aug 15 2022 12:08:07 +0200
Passphrase :
Again :
Private key saved to /home/ClientUser/.ssh2/id_rsa_3072_a
Public key saved to /home/ClientUser/.ssh2/id_rsa_3072_a.pub
```

ssh-keygen-g3 asks for a passphrase for the new key. Enter a sufficiently long (20 characters or so) sequence of any characters (spaces are OK).

The new authentication key pair consists of two separate files. One of the keys is your private key which *must never* be made available to anyone but yourself. The private key can only be used together with the passphrase.

The key pair is by default stored in your `$HOME/.ssh2` directory (created by **ssh-keygen-g3** if it does not exist previously).

In the example above, the private key file is `id_rsa_3072_a`. The other file `id_rsa_3072_a.pub` is your public key, which can be distributed to other computers.

By default, **ssh-keygen-g3** creates a 3072-bit RSA key pair. DSA, ECDSA or Ed25519 keys can be generated by specifying the `-t` option with **ssh-keygen-g3**. Key length can be specified with the `-b` option. For automated jobs, the key can be generated without a passphrase with the `-P` option:

```
$ ssh-keygen-g3 -t ecdsa -b 384 -P
```

Uploading Public Key Manually

To enable public-key authentication with your key pair:

1. Check that your keys are stored in the default location: the `$HOME/.ssh2` directory.
2. Connect to `Server` using your password.
3. Use the Secure Shell file copy client **scpg3** to upload your public key to the server, to your default `authorized_keys` directory, the `$HOME/.ssh2/authorized_keys` directory:

```
$ scp3 id_rsa_3072_a.pub ServerUser@Server:~/.ssh2/authorized_keys/
```

The server will then use the uploaded public key to authenticate you when you log in after this.

4.4 Setting up Non-interactive Authentication for Automatic Scripts

When Tectia Server is used for automated file transfer, you can create separate user accounts for file transfer purposes. When such user accounts are used only for non-interactive file transfers, it is advisable to disable terminal access on the server side. See instructions in [the section called “Restricting Terminal Access”](#).

Non-interactive authentication with public keys and scripted commands can be set for the SFTP accounts. For non-interactive batch jobs, you can use public-key authentication without a passphrase.

Running the client non-interactively requires that you have already saved the server's public host key on the client, and set up a non-interactive method for user authentication. Batch mode should be used non-interactively with command-line tools.

1. Generate a 3072-bit RSA (default length and type) key pair with an empty passphrase by giving the following command:

```
Client$ ssh-keygen-g3 -P
```

where `-P` generates the private key with an empty passphrase.

2. For uploading the keys, see instructions in [the section called “Uploading Public Key Manually”](#).



Caution

Make sure your private key is not accessible to others. This is especially important when the key is stored without a passphrase.

For more information on other non-interactive authentication methods, see Chapter *Authentication* in *Tectia Server Administrator Manual*.

Chapter 5 Using Secure File Transfer

Secure File Transfer Protocol (SFTP) is a secure replacement for the plain-text FTP service. The SFTP service encrypts all files during the transfer.

This chapter shows how secure file transfer is used and describes a use case plus the required configuration changes.

5.1 Using SFTP on Tectia Client

On Tectia Client, the default settings for SFTP are applicable in most cases, so you can start experimenting with file transfers immediately.

5.1.1 Using SFTP on Command Line

Command **sftpg3** is used on the command line to connect to any host that is running a Secure Shell version 2 server with the SFTP server subsystem enabled.

The basic syntax of **sftpg3** is:

```
sftpg3 username@remotehost
```

This logs you in to the remote host. For example, after a successful login you can fetch a file from the remote host to your local host with a command like this:

```
sftp> get filename
```

To view the commands available with **sftpg3**, type **help** at the SFTP prompt:

```
sftp> help
```

For more information on **sftpg3**, see the `sftpg3(1)` man page or the *Tectia Client User Manual*.

5.2 Configuring Tectia Server for Automated Secure File Transfer

Tectia Server can be used for automated secure file transfer. This use case shows how to configure Tectia Server for it. Tectia Client does not require any configuration changes.

The goal of changing the Tectia Server configuration is to improve the security of the system for automated file transfers. This requires some user restrictions on the SFTP usage. In this use case, the following restrictions are defined on Tectia Server:

1. Public keys are the only allowed authentication method. See instructions in [the section called “Enabling Public-Key Authentication”](#).
2. SFTP service is allowed only for specially created user groups `SFTP-users` and `admin`. SFTP service is denied from all other users. See instructions in [the section called “Restricting Access to File Transfer Service”](#).
3. Members of `SFTP-users` have access to their user-specific home folders only. This can be defined with chrooting settings. See instructions in [the section called “Restricting Access to Folders”](#).
4. Terminal access is allowed only for administrators; from everyone else, it is denied. See instructions in [the section called “Restricting Terminal Access”](#).
5. Tectia Server will be connecting to port 22, the default port for secure shell connections.

5.2.1 Configuration Settings in `ssh-server-config.xml`

For the example use case, we need to override some of the Tectia Server default settings. This is done by creating an xml-format configuration file `ssh-server-config.xml`.

Create the configuration file by copying and renaming one of the following files (use the settings as a model):

```
/etc/ssh2/ssh-server-config-example.xml
/etc/ssh2/ssh-server-config-tutorial.xml
```

You can view the default settings in file:

```
/etc/ssh2/ssh-server-config-default.xml
```

The following example shows the configuration file with the settings required to produce the use case described in [Section 5.2](#).

For instructions, see the sections below the configuration file example.

```
<?xml version="1.0" encoding="UTF-8"?>
<!DOCTYPE secsh-server SYSTEM
  "/opt/tektia/share/auxdata/ssh-server-ng/ssh-server-ng-config-1.dtd" [
  <!ENTITY configdir PUBLIC "secsh:directory(config-server)" ">
]>
<secsh-server>

<!--This block defines the allowed cryptographic methods-->
<!--Keep the default settings-->
<params>
  <crypto-lib mode="standard" />
  <hostkey>
    <private file="&configdir;/hostkey" />
    <public file="&configdir;/hostkey.pub" />
  </hostkey>
```

```

<listener id="listener" port="22" />
<limits max-connections="256" max-processes="40" />
</params>

<!--This block defines the allowed server authentication methods-->
<!--Keep the default settings-->
<connections>
  <connection action="allow">
    <cipher name="aes128-cbc" />
    <cipher name="aes192-cbc" />
    <cipher name="aes256-cbc" />
    <cipher name="aes128-ctr" />
    <cipher name="aes192-ctr" />
    <cipher name="aes256-ctr" />
    <cipher name="3des-cbc" />
    <cipher name="crypticore128@ssh.com" />
    <mac name="hmac-shal" />
    <mac name="hmac-shal-96" />
    <mac name="hmac-sha256-2@ssh.com" />
    <mac name="hmac-sha224@ssh.com" />
    <mac name="hmac-sha256@ssh.com" />
    <mac name="hmac-sha384@ssh.com" />
    <mac name="hmac-sha512@ssh.com" />
    <mac name="crypticore-mac@ssh.com" />
  </connection>
</connections>

<!--This block defines the allowed user authentication methods-->
<!--Allow only public key authentication-->
<authentication-methods login-grace-time="600">
  <authentication action="allow">
    <auth-publickey />
  </authentication>
</authentication-methods>

<!--This block defines first user groups and then a set of rules for each group-->
<!--The default settings are applied to users left outside the groups-->
<services>

<!--Define a group for enforced password changing for users with-->
<!--expired passwords.-->
<!--Omit this group if you do not want to enforce password changes-->
<group name="passwd-change">
  <selector>
    <user-password-change-needed />
  </selector>
</group>

<!--Define a group for privileged users-->
<!--Selector is used to define criteria for inclusion into the group-->
<group name="admin">
  <selector>
    <user-privileged value="yes" />
  </selector>

```

```

</group>

<!--Define a group for SFTP-only users-->
<!--The members are listed in a separate group named staff-->
<group name="SFTP-users">
  <selector>
    <user-group name="staff" />
  </selector>
</group>

<!--Define the enforced password changing policy-->
<!--Omit this group if you do not want to enforce password changes-->
<rule group="passwd-change">
  <terminal action="deny" />
  <command application="/usr/bin/passwd" action="forced" />
  <tunnel-local action="deny" />
  <tunnel-remote action="deny" />
</rule>

<!--Define what the privileged users are allowed to do-->
<rule group="admin"
  idle-timeout="0">
  <terminal action="allow" />
  <subsystem type="sftp"
    action="allow"
    application="sft-server-g3" />
  <command action="allow" />
  <tunnel-local action="allow" />
  <tunnel-remote action="allow" />
</rule>

<!--Define what the SFTP-only users are allowed to do-->
<rule group="SFTP-users">
  <terminal action="deny" />
  <subsystem type="sftp"
    action="allow"
    application="sft-server-g3"
    chroot="/home/%username%" />
  <command action="deny" />
  <tunnel-local action="deny" />
  <tunnel-remote action="deny" />
</rule>

<!--Define that all actions are denied from the rest of the users-->
<rule>
  <terminal action="deny" />
  <subsystem type="sftp"
    action="deny"
    application="sft-server-g3" />
  <command action="deny" />
  <tunnel-local action="deny" />
  <tunnel-remote action="deny" />
</rule>
</services>

```

```
</secsh-server>
```

For information on Tectia Server behavior with expired passwords, see section *Configuration File for Tectia Server* in *Tectia Server Administrator Manual*.

Enabling Public-Key Authentication

To enable public-key authentication on the server, include the following settings in the `ssh-server-config.xml` file, in the `<authentication-methods/>` block:

```
<authentication action="allow">
  <auth-publickey />
</authentication>
```

When one or more `<authentication/>` elements are defined, only those methods specified in them are applicable. If no `<authentication/>` elements are defined, the default settings are used.

Restricting Access to File Transfer Service

To restrict the access to the file transfer service, first create user groups and then define rules for them.

In the `ssh-server-config.xml` file, define groups with names `admin` and `SFTP-users` in the `services` block.

With element `<selector/>`, define who belongs to each group. Group `admin` includes all privileged users. Group `SFTP-users` includes those users who are allowed to use the SFTP service. Attach an existing operating system-related user group, for example "staff", to the `SFTP-users` group.

```
<group name="admin">
  <selector>
    <user-privileged value="yes" />
  </selector>
</group>

<group name="SFTP-users">
  <selector>
    <user-group name="staff" />
  </selector>
</group>
```

Definitions of the XML elements:

group

Creates a group that can be used as a basis for restricting services. Groups are defined based on selectors.

The `name` must be given as an attribute. The value of `name` must be a valid XML name beginning with a letter and containing alphanumeric characters and underscore characters without any whitespaces.

selector

The selector defines criteria that specify the users that belong to the group.

rule

This element defines a rule for the specified `group` of users. Rules can be used to restrict the services and commands the server allows to the users.

The rules are read in order, and the first rule that matches the user's `group` is used. The match must be exact. No wildcards are allowed in the `group` attribute. If no `group` is specified, the rule matches to all users.

```
<rule group="SFTP-users">
  <terminal action="deny" />
  <subsystem type="sftp"
    action="allow"
    application="sft-server-g3"
    chroot="/home/%username%" />
  <command action="deny" />
  <tunnel-local action="deny" />
  <tunnel-remote action="deny" />
</rule>

<rule>
  <terminal action="deny" />
  <subsystem type="sftp"
    action="deny"
    application="sft-server-g3" />
  <command action="deny" />
  <tunnel-local action="deny" />
  <tunnel-remote action="deny" />
</rule>
```

For the rest of the XML element definitions, see *Tectia Server Administrator Manual*.

Restricting Access to Folders

By default, file access by the user using the SFTP subsystem is restricted by the file system access controls. You can define more restrictions by activating chrooting.

Chrooting definitions are made in the `ssh-server-config.xml` configuration file.

Folder access can be further restricted by using the `chroot` attribute. The `chroot` attribute can be used with the `subsystem`, `terminal`, and `command` elements. For more information on chrooting, see *Tectia Server Administrator Manual*.

The `chroot` attribute must be a directory path. Values `%username%`, `%homedir%`, and `%hostname%` will be substituted with the user name currently logged in, the user's home directory, and the FQDN of the connected client, respectively.

An example of `chroot` usage is shown below:

```
<rule group="SFTP-users">
  <subsystem type="sftp"
    action="allow"
    application="sft-server-g3"
```

```
chroot="/home/%username%" />
</rule>
```

Here `%username%` will be replaced. For example, for user `user7`, the path would be `/home/user7`. During an SFTP session, user `user7` is now restricted to this directory (and its subdirectories).



Note

Chrooting the SFTP subsystem affects both SFTP and SCP2 operations to the server, but it does NOT affect legacy OpenSSH-style SCP operations. To chroot also OpenSSH SCP (version 8 or older), you should chroot the `scp1-compat-srv` command. For instructions, see *Tectia Server Administrator Manual*. If you want to deny OpenSSH SCP, you can disable all remote commands as is done in this example.

Restricting Terminal Access

You can restrict terminal access so that it is allowed only for users in group `admin`. To disable terminal access from everyone else, make the following settings in the `ssh-server-config.xml` file, in the `services` block:

```
<rule group="admin">
  <terminal action="allow" />
  ...
</rule>

<rule group="SFTP-users">
  <terminal action="deny" />
  ...
</rule>

<rule>
  <terminal action="deny" />
  ...
</rule>
```

This setting denies also X11 and agent forwarding and shell commands for the specified group (unless some commands are explicitly allowed).

The users will be able to use SFTP and other subsystems defined in the Tectia Server configuration. Any other "exec" and "shell" requests will be denied for the users. This includes forced commands with public keys and the legacy-style password changing when performed as a forced command.

5.3 Automated Secure File Transfer Script

You can set up automated file transfer between Tectia Client and Server hosts using scripts.

When Tectia Server is used for automated file transfer, separate user accounts can be created for the file transfer users. Non-interactive authentication with public keys and scripted commands are then set for these accounts, and the file transfers are carried out as the current user.

The following example script first transfers `testfile` from Tectia Client to Tectia Server and then transfers the file back. The script logs the command and the return values to a file.

```
#!/bin/bash

date=`date +%d.%m.%Y-%H.%M`
SRV=sftp.example.com

#scpg3 put
echo "/opt/tectia/bin/scpg3 -B -q testfile $SRV:test" >> scpg3_put_$DATE
/opt/tectia/bin/scpg3 -B -q testfile.dat $SRV:test
echo $? >> scpg3_put_$DATE

#scpg3 get
echo "/opt/tectia/bin/scpg3 -B -q $SRV:test test" >> scpg3_get_$DATE
/opt/tectia/bin/scpg3 -B -q $SRV:test test
echo $? >> scpg3_get_$DATE
```

The script can be set to run as a forced command.

Chapter 6 Using Secure Application Connectivity

This chapter shows how to set up easy application tunneling with pre-configured automatic tunnels for secure e-mail server access. The client machine where the e-mail application is running requires Tectia Client.

The tunneling capability of Tectia is a feature that allows, for example, company employees to access their e-mail, company intranet pages, and shared files securely even when working outside the office.

Tunneling, or port forwarding, is a way of forwarding otherwise unsecured TCP application traffic through Tectia in secure encrypted format. You can secure, for example, POP3, SMTP, and HTTP connections that would otherwise be unsecured.

Tunneling makes it possible to access e-mail from any type of Internet service, whether accessed via modem, GPRS, 3G, a DSL line or a cable connection, or a hotel Internet service. As long as the users have a TCP/IP connection to the Internet, they can get their e-mail and access other resources from anywhere in the world securely.

The Tectia Connection Broker takes care of the tunneling in the background. When the Connection Broker starts up, it opens the listeners for the defined automatic tunnels and asks the user to enter the password or passphrase. If the connections are authenticated with public keys that have empty passphrases, the user does not need to take any actions. The actual tunnel is formed the first time a connection is made to the listener port.



Note

The user applications using the tunnel will carry out their own authentication procedures (if any) the same way they would without the encrypted tunnel.

The automatic tunnels are local (outgoing) tunnels, which means that they protect TCP connections that your local computer forwards from a specified local port to a specified port on the remote host computer where you are connecting to. It is also possible to forward the connection beyond the remote host computer, but the connection is encrypted only between Tectia Client and the Secure Shell server.

Figure 6.1 shows an example where the Secure Shell server resides in the DMZ network. The connection is encrypted from Tectia Client to the Secure Shell server and continues unencrypted within the corporate network to the IMAP server.

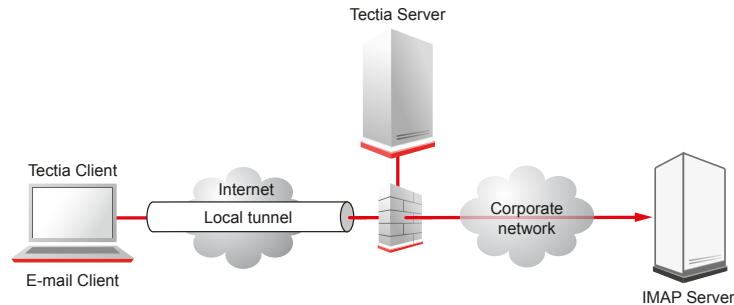


Figure 6.1. Local tunnel to an IMAP server

6.1 Defining Automatic Tunnels

Automatic tunnels are pre-configured secure connections to servers and the connections are opened automatically when Tectia Client starts up (usually when the session is started). The actual tunnel is formed the first time an application connects to the listener port. If the connection to the server is not open at that time, it will be opened automatically as well.

Automatic tunneling requires settings on Tectia Client and on the application. For instructions on defining the automatic tunnels on Tectia Client, see [Section 6.1.1](#).

For instructions on defining the automatic tunnels on the application to be tunneled, see [Section 6.1.2](#).

For instructions on defining the automatic tunnels in the Connection Broker configuration file, see [Section 6.1.3](#).

6.1.1 Settings in Tectia Client

Automatic tunnels are configured with the **Tectia Connections Configuration GUI**.

Open the tool by going to the `/opt/tectia/bin/` directory and starting the tool:

```
$ cd /opt/tectia/bin/
```

```
$ ssh-tectia-configuration
```

Select **Automatic Tunnels** in the tree menu and click **Add** to open the **Automatic Tunnel** dialog box.

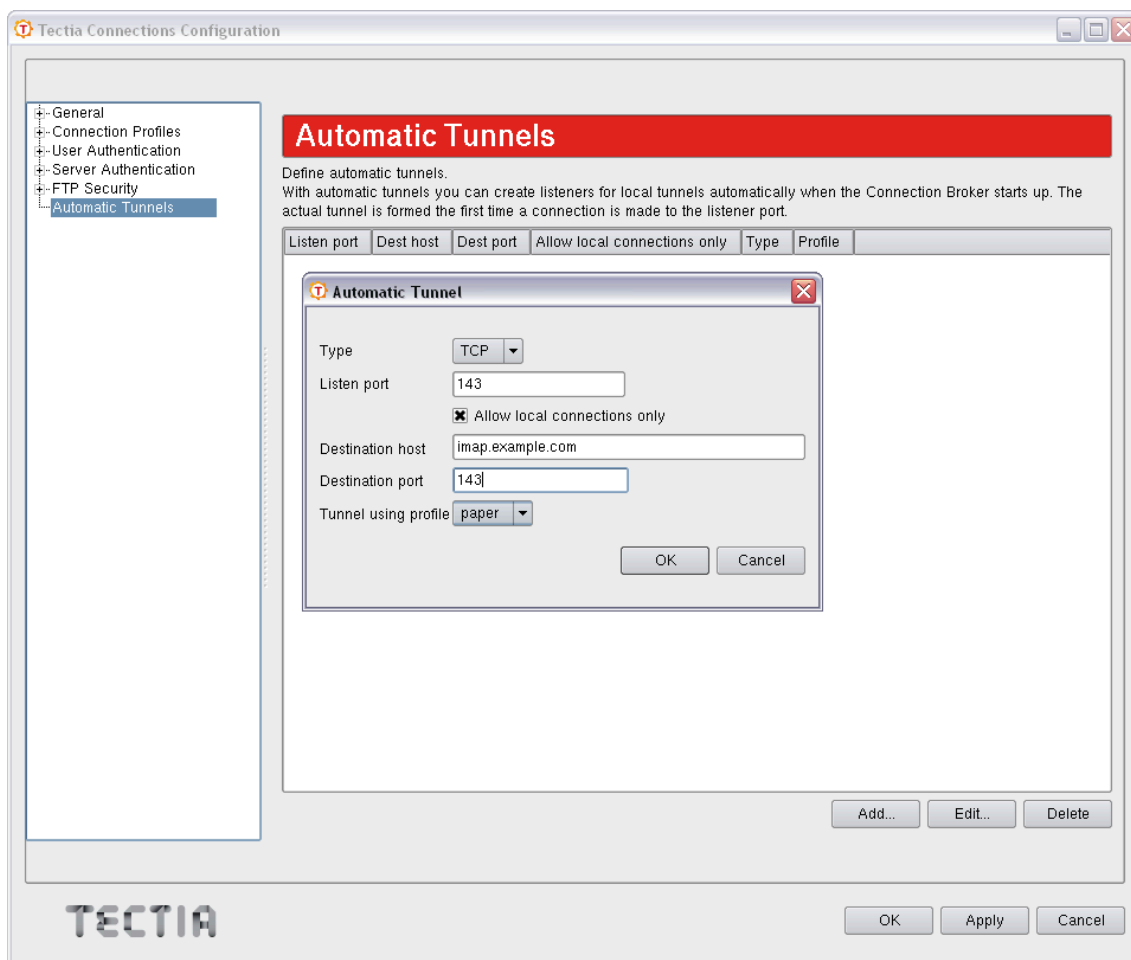


Figure 6.2. Defining an automatic tunnel

Fill in the fields as follows:

- **Type:** Select the type of the tunnel from the drop-down list. Available types are TCP and FTP.
- **Listen port:** Define the number of a local port that Tectia Client listens to and that the applications connect to. Do not use a reserved port number.

Note

The protocol or application for which you wish to create the tunnel may have a fixed port number (for example, 143 for IMAP and 25 for SMTP) that it needs to use to connect successfully. Other protocols or applications may require an offset (for example, 5900 for VNC) that you will have to take into account.

- **Allow local connections only:** Leave this option selected if you want to allow only local connections to be made. This means that other computers will not be able to use the tunnel you created. By default, only local connections are allowed. This is the right choice for most situations. You should carefully consider the security implications if you decide to also allow outside connections.
- **Destination host:** This field defines the destination host for the tunnel.



Note

The destination host address is resolved after the Secure Shell connection has been established, so here `localhost` means to the Tectia Server host you have connected to.

- **Destination port:** The destination port defines the port to which the tunneled connection is made on the destination host.
- **Tunnel using profile:** Select a connection profile through which the tunnel will be created. See [Section 3.2](#) for instructions on creating connection profiles.

To edit an automatic tunnel, select the tunnel from the list and click **Edit**.

To delete an automatic tunnel, select the tunnel from the list and click **Delete**.

6.1.2 Settings in the Tunneled Application

The application (for example, an IMAP and SMTP e-mail, such as Pine) must be configured to connect to the `localhost` port instead of the application server port.

When the tunneled application connects to the `localhost` port, the connection is forwarded in encrypted format to Tectia Server, and from there unencrypted to the application server.

6.1.3 Settings in the Connection Broker Configuration File

You can define automatic tunnels in the Connection Broker configuration file `ssh-broker-config.xml` with the `static-tunnels` XML element.

The following configuration example shows a connection profile with the `static-tunnels` settings for IMAP and SMTP e-mails whose connections will be forwarded through a connection profile:

```
<profiles>
  <profile id="id1"
    user="user7"
    host="sshserver.example.com" />
</profiles>

<static-tunnels>
  <tunnel type="TCP"
    listen-port="143"
    dst-host="imap.example.com"
    dst-port="143"
    allow-relay="no"
    profile="id1" />

  <tunnel type="TCP"
    listen-port="25"
    dst-host="smtp.example.com"
    dst-port="143" />
</static-tunnels>
```

```
    allow-relay="no"  
    profile="idl" />  
</static-tunnels>
```

With the `static-tunnels` setting, the listeners for local tunnels are automatically created when the Connection Broker starts up. The actual tunnel is formed the first time a connection is made to the listener port. If the connection to the server is not open at that time, it will be opened automatically as well.

Whenever a connection is made to the specified listener, the connection is tunneled over Secure Shell to the remote server and another connection is made from the server to a specified destination host and port. The connection from the server onwards will not be secure, it is a normal TCP connection.

The `static-tunnels` element can contain any number of `tunnel` elements.

The `tunnel` element specifies the characteristics of an automatic tunnel. It has the following attributes: `type`, `listen-port`, `listen-address` (optional), `dst-host`, `dst-port`, `allow-relay`, and `profile`.

The `type` attribute defines the type or protocol of the tunnel. This can be either `tcp` or `ftp`.

The `listen-port` attribute defines the local port to which Tectia Client listens. The optional `listen-address` attribute can be used to define which network interfaces on the client listens to. Its value can be an IP address belonging to an interface on the local host. Value `0.0.0.0` listens to all interfaces. The default is `127.0.0.1` (localhost loopback address on the client). Setting any other value requires setting `allow-relay="yes"`.

The `dst-host` and `dst-port` attributes define the destination host address and port. The value of `dst-host` can be either an IP address or a domain name. The default is `127.0.0.1` (localhost = server host).

The `allow-relay` attribute defines whether connections to the listened port are allowed from outside the client host. The default is `no`.

The `profile` attribute specifies the identifier of the connection profile through which the connection is tunneled.

Index

A

AIX

- installation, 16, 20

- Apple macOS, 15

- application connectivity, 49

- application tunneling, 49

- authentication, 31

 - of server, 31

 - of user, 31, 32

 - public-key, 45

 - with passwords, 31

 - with public keys, 32

- automated file transfer, 47

- automatic tunnels, 50, 52

C

- chrooting, 46

- client

 - installation, 13, 14, 15

- connection profiles, 26

- customer support, 9

D

- Debian, 14, 18

 - client installation, 14

 - server installation, 18

- DEB packages, 14, 18

- default installation directory, 15

- denying terminal access, 47

- Disk Image, 15

- documentation, 5

- documentation conventions, 7

F

- file transfer, 41

 - automated, 47

G

- generating keys, 33

- group, 45

H

- home directory, 46

I

- IBM AIX, 16, 20

- installation

 - directory, 15

 - preparations, 11

 - removing Tectia products, 23

 - upgrading, 12

- installing

 - client on Debian, 14

 - client on Linux, 13

 - client on macOS, 15

 - server on Debian, 18

 - server on Linux, 17

 - Tectia products, 12

- installing Tectia Client and Server

 - on AIX, 15, 20

 - on Solaris, 16, 21

K

- key file, 35

L

- license file, 12

- licensing, 12

- Linux

 - client installation, 13

 - server installation, 17

 - uninstallation, 24

M

- macOS

 - installation, 15

N

- nested tunnel, 29

O

- online purchase, 12

- Oracle Solaris, 16, 21

P

- passphrase, 38
- PKG package, 15
- port, 29
- prerequisites, 11
- private key
 - of user, 38
- profile settings, 26
- public key
 - of user, 38
 - uploading, 36
- public-key authentication, 45
- Public-Key Authentication Wizard, 33

R

- Red Hat Linux, 13, 17
- related documents, 5
- removing
 - old versions, 12
 - software, 23
- removing from Linux, 24
- restricting services, 46
- Rocky Linux, 13, 17
- RPM packages, 13, 17

S

- secure file transfer, 41
 - configuring it, 41
 - using it, 41
- services
 - restricting, 46
- settings
 - profile, 26
- setting users to a group, 45
- SFTP, 41
 - use case, 41
- Solaris
 - installation, 16, 21
- ssh-keygen-g3, 38
- static tunnels, 50, 52
- support, 8
- SUSE Linux, 13, 17

T

- technical support, 9
- Tectia Client, 6
- Tectia Server, 7
- Tectia Server Configuration tool, 7
- Tectia Server for IBM z/OS, 7
- terminology, 6
- tunneling, 49

U

- Ubuntu, 14, 18
- uninstalling, 23
- uninstalling from Linux, 24
- upgrading, 12
- uploading a public key, 36, 39
- user account, 12
- user authentication, 31, 32
- user key, 39

X

- XML attribute
 - allow-relay, 53
- XML element
 - group, 45
 - rule, 46
 - selector, 45
 - services, 45
 - static-tunnels, 52
 - tunnel, 53